

Cooperation is key to manage Greater Sydney Harbour

Reflections on the development of the CMP

Presented by:
Sarah Joyce, SCCG



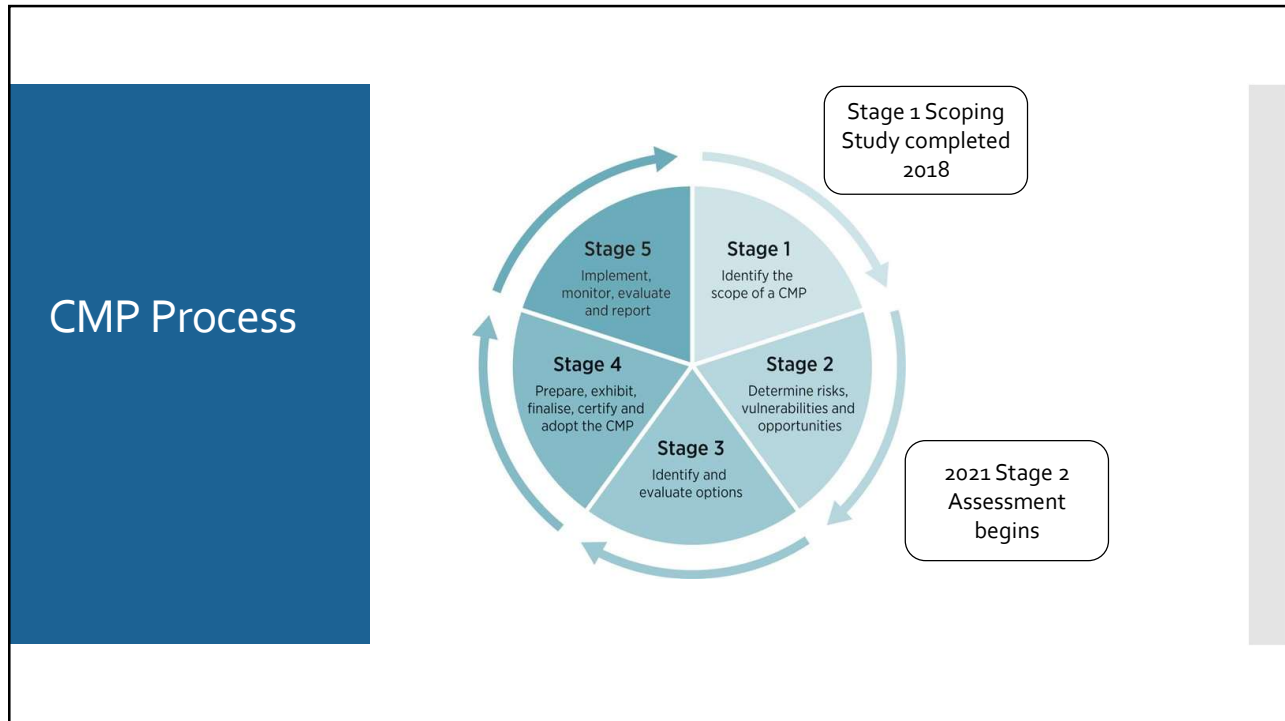
This project is supported by the NSW Government's Coastal and Estuary Grant Program – Planning Stream.

1

Overview of presentation

- Priorities identified in the Stage 1 Scoping Study in 2018
- Summary of our key approaches to the Stage 2 Assessment
- Scope of Stage 2 and early findings

2



3



4

Our Key Approaches to the Stage 2 Assessment



5

1. Established a shared vision with clear objectives

Our Vision for Greater Sydney Harbour
To improve and sustain waterway health through improved coordination, consistency and leadership

A key objective

To reduce priority threats to waterway health in the catchment

Urban Stormwater Discharge

Consistency, capacity, needs and leadership

Sewage Discharge

Sewer entering network

Climate change

Impact of SLR and storm intensity

Greater demand for swim sites due to urban heat

Marine Debris

Regional Litter Prevention Strategy

Regional Litter Coordinator

6

3

2. Joined forces with those who shared our vision



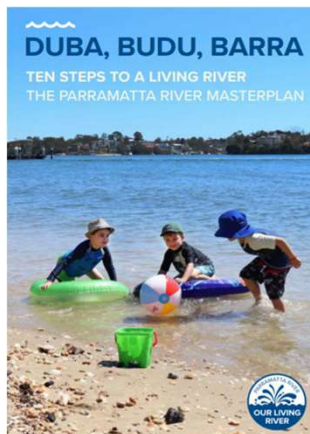
Regional Organisation of Councils that promotes collaboration between Member Councils on environmental issues relating to the sustainable management of the urban coastal and estuarine environment.



The Parramatta River Catchment Group (PRCG) is an alliance of local and state government agencies and community groups. Our vision is to transform the Parramatta River and its tributaries into living waterways so wildlife and the community can all thrive.

7

This collaboration is building on the great work already being done by the PRCG



8

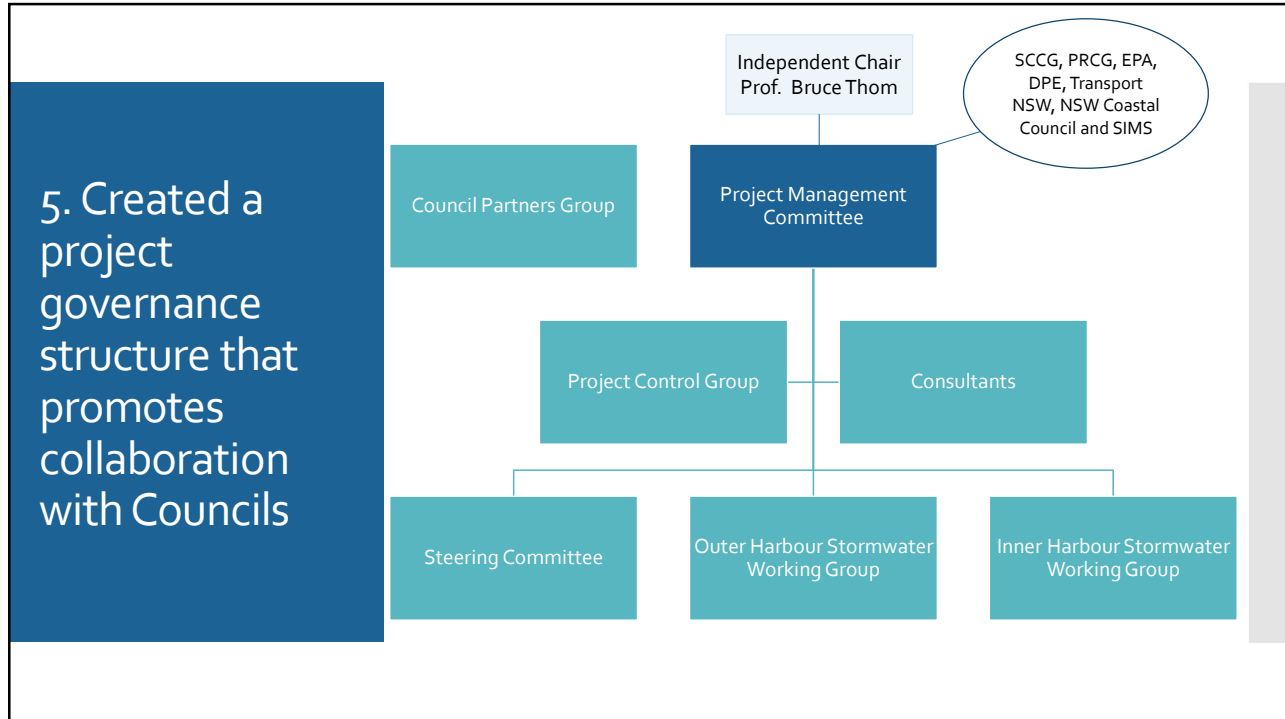


9

4. Overcame barriers in applying for a C&E Grant

1. Getting 20 Councils on board
 - financial contributions required (2:1 grant model).
 - 6 Councils weren't members of either SCCG or PRCG
 - Development of a video seeking stakeholder buy-in
 - Minister for Local Government writing to all 21 Councils
2. Applying for the Grant as a ROC
 - initially ROCs were ineligible
 - it required the Minister to change the guidelines to include ROCs.

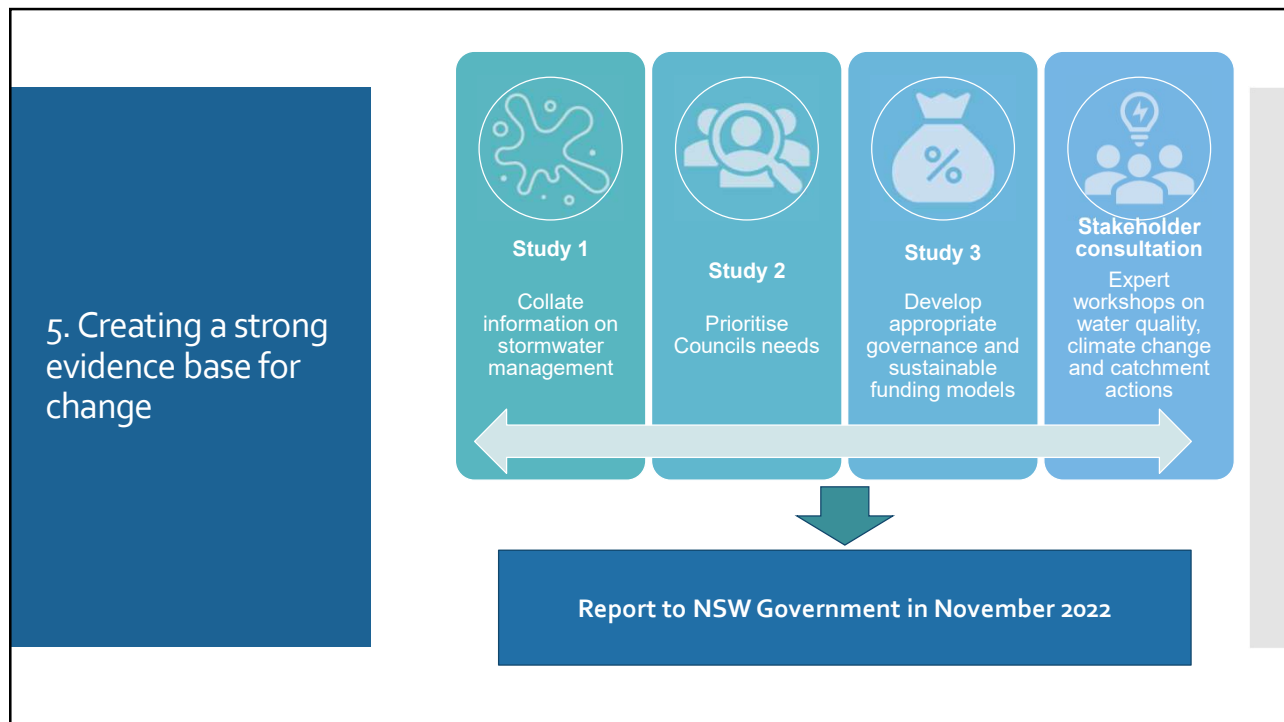
10



11

6. Complement and seek to support relevant NSW Government strategies and policies

12



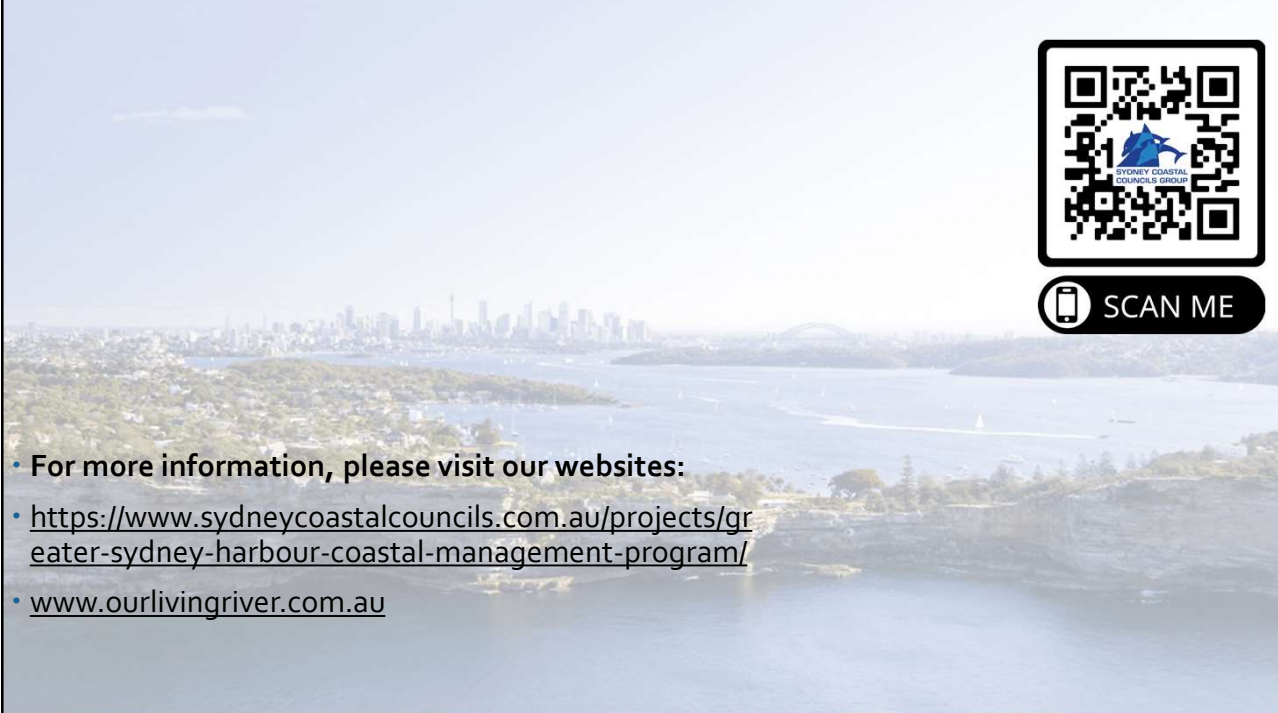
13

Key finding from Study 1 following an assessment with 20 Councils on their stormwater management

While there is significant action underway across the catchment to address diffuse stormwater pollution, actions are not coordinated nor integrated within a whole of catchment governance framework. Significant gaps exist between high-level objectives (outcomes) and how funding, programs and activities (commitments) are implemented.

Moreover, the lack of coordination within organisations (horizontal) and between (vertical) levels of government reveals the porosity of responsibilities and accountabilities at the institutional level, despite community aspirations for better waterway outcomes.

14



• For more information, please visit our websites:

- <https://www.sydneycoastalcouncils.com.au/projects/greater-sydney-harbour-coastal-management-program/>
- www.ourlivingriver.com.au

